

Domain

INSIDE
Market wrap
 Are vendors living in a bubble?
 Page 4



First among equals

THE WINNERS OF THIS YEAR'S ARCHITECTURE AWARDS.

PAGES 2-3

HOT PROPERTIES

TOTAL AUCTIONS

Auctions 521
 Clearance rate 67%
 Sold at auction 284
 Sold before 63
 Sold after 0
 Auctions with no results 55
 Auction volume \$221.97m

HOUSES

For auction 306
 Clearance rate 66%
 Total value \$141.509m
 Median price \$643,750

APARTMENTS

For auction 197
 Clearance rate 67%
 Total value \$70.706m
 Median price \$503,250

HIGHEST PRICE HOUSE

1 Townsend Street, Glen Waverley \$2.180m

APARTMENT

3A Hamilton Street, Brighton \$1.370m

LOWEST PRICE HOUSE

6 Teeda Court, Melton South \$252,000

APARTMENT

142/92 Grey Street, St Kilda \$240,000

Private sales 615
 Private sales volume \$289.52m

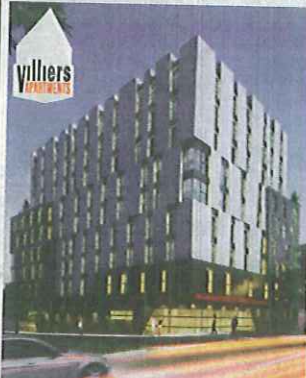
RESULTS AS DISCLOSED TO THE REIV



Just what you're looking for

Domain.com.au

North Melbourne 75 Flemington Road



BRAND NEW
1 Bedroom apartments
 FROM
\$179,500

INSPECT
 Sat & Sun
 2.30-4.30pm
 Inspect Sales Office
 75 Flemington Rd
 North Melbourne
 (corner of Villiers St)
 Mel-Ref: 43-E4

CONTACT
 Mark Forystaz
 0407 766 308
 Sam Emille
 0407 760 125

- Selected apartments boast terraces with spectacular views of the city.
- Stylish finishes throughout providing the highest standard in student only living.
- Directly opposite Royal Melbourne Hospital and only minutes walk away to Melbourne University.
- City-edge location providing Melbourne's best dining, entertainment and shopping.
- Massive stamp duty savings.

Hawthorn 178 Riversdale Road



LUMA
 HAWTHORN

INSPECT
 Sales Office
 Today 12 - 2pm
 (Near Cnr Robinson Rd)

CONTACT
 Sam Emille
 0407 760 125

from
\$385,000

Stylish 1 & 2 Bedroom Apartments

- Boutique building of only 30 apartments
- Exceptional living spaces with courtyards or outdoor terraces
- Designer finishes including stone benchtops
- Reverse cycle heating and cooling
- Secure basement parking with direct lift access
- Substantial stamp duty savings

FEATURE

JAYNE D'ARCY



LYON HOUSE MUSEUM
KEW



TOP: CORBETT LYON AND WIFE YUEJIN IN THEIR AWARD-WINNING HOUSE. BOTTOM: RODGER CUMMINS, DIANNA SNARE

UNEXPECTED DESIGN AND AN UNDENIABLE WOW FACTOR UNITE THESE DIVERSE ARCHITECTURE AWARD WINNERS.

The element of surprise

A house that doubles as a museum. A circular tower that invokes the concept of a planetarium. An 1850s homestead hidden behind an aged cypress hedge.

Every year, the Victorian Architecture Awards reveal new and exciting ideas in design and building from both established and emerging practices. Diverse, yet individually interesting, each entry is a remarkable statement of the design vision that has set the industry at the forefront of global architecture. This year's entries were no exception.

Residential entries for the 2010 awards were up in numbers, with a total of 67 entries, including 19 in the residential alterations and extensions category, 29 in the new residential category, and 19 in the multiple category.

The overall winner of the residential categories — the Harold Desbrowe-Anneer Award — was a bold mix of public and private spaces. Part-home, part-museum, the Lyon Housemuseum in Kew was, according to the jury, a success because of "the delicate and confident weaving of a sensitive family home through the towering galleries and spaces".

A joint winner in the new residential category, the Barwon Heads Henley Street project by Jackson Clements Burrows was praised by the jury as an "outstanding example of how pure architectural concept has been crafted into an engaging family home with an engaging streetscape presence".

The other new residential category winner, Brent Knoll in Malmsbury, by Melbourne's March Studio, was acknowledged as "an innovative example of a considered and subtle balance of architectural eccentricity, coupled with rural respect".

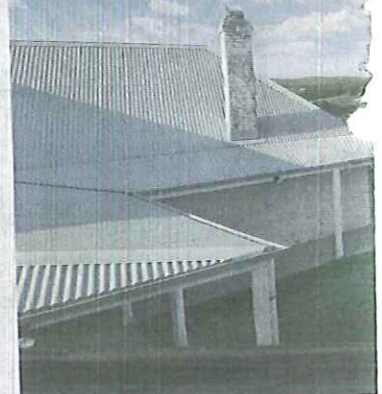
LYON HOUSE MUSEUM, KEW

This home doubles as a museum for a private collection of modern art. For months it housed the Lyon family and their art, but in September last year, as intended, the house began doubling as a museum.

"It's a home for a family; for kids scootering on the concrete floor. There's a vegie garden," explains design assistant Nicholas Ling of architecture firm Lyons.

Then, twice a week, it's open to 50 or 60 complete strangers, and it's a crossover between family and art. People are constantly on their toes, wondering is it art, or is it part of the family life?

Mr Ling points specifically to the installation of Patricia Piccinini's *Truck Babies* (two fibreglass trucks watching a line of TVs) as an example. The architectural brief specified the dual use of rooms with, for example, the timber-lined family kitchen also acting as the museum cafe, and the family's dining room doubling as a place for public meetings. Its aim is to challenge conventional perceptions of public and private, and while strangers can wander through most of the house, which belongs to one of the Lyon brothers, there are still "private" places for the family.



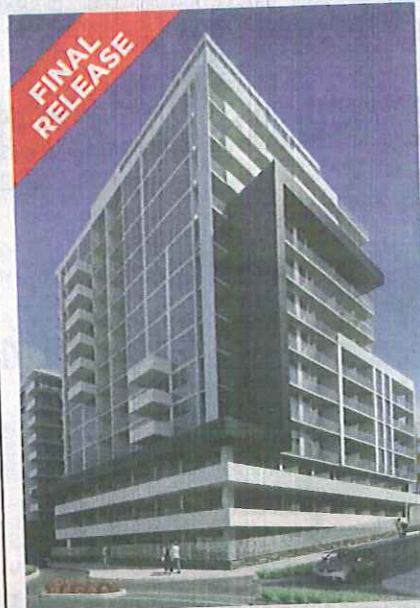
HENLEY STREET, BARWON HEADS

It was the circular tower, or "second-storey drum" that grabbed the attention of the Australian Institute of Architects in Jackson Clements Burrows' winning house on Henley Street, Barwon Heads. Yet in the planning stages that tower was merely a desire.

"The client wanted a planetarium in the house, and it was a bit of a joke at the start, but I thought I'd try to design a circular form for a skylight as somewhere to start," says Jon Clements, the project's architect. Timber and polished concrete floors are a focal point inside and vertical timber slivers slip down from the house and tower, becoming the front fence.

South Yarra

from **\$375,000**



FINAL RELEASE

Brand new **1 & 2 Bedrooms with Balconies**

Construction Commenced

Brilliantly designed, River Street Apartments offer:

- Premier northerly aspect to selected apartments
- Magnificent stone finishes to kitchen
- Exceptional living areas, terraces and courtyards
- Reverse cycle heating and cooling
- Outstanding Stamp Duty savings
- Full security and basement car accommodation with direct lift access
- Located 50 meters from Chapel Street shops, restaurants and cafes
- Transport and Yarra River at your door

INSPECT Display Suite
Cnr Toorak Road and
Cunningham Street, South Yarra
Today 130-230pm

CONTACT
Michael Lang 0407 766 771

www.riverapartments.com.au

Melbourne's No.1 Pre-sale Agents

83 apartments
100% SOLD OUT in 5 weeks



341 Harcourt Road, Northcote

Michael Lang 0407 766 771
Tim Brown 0417 766 778

Castran Gilbert